

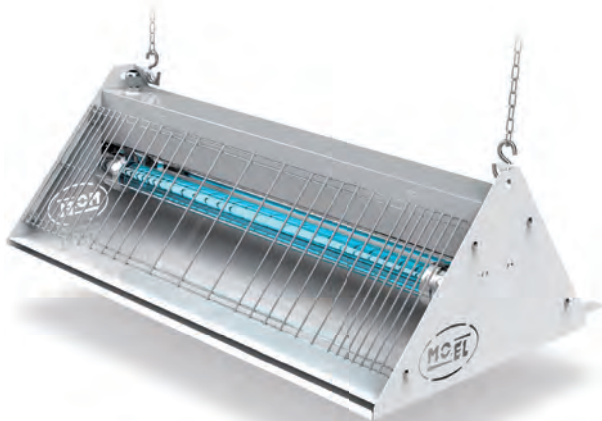
ELECTRICAL INSECTS TRAPS

IS42
CasaFan



CRI CRI®

with high voltage grid



MO-STICK

with adhesive paper



insectivoro

with exhaust fan



ELECTRIC INSECTICIDES

Electric insecticides system perfectly imitates what happens in nature. Mosquitos lay their eggs in dark and damp places, where they are sheltered and are safe from the danger of dehydration. Once born, the small insects cannot leave this environment during the day because of the sun rays that would lead them to dehydration and therefore to death. This is the reason why the insect flickers only at night: the only rays that guide his path are the UV rays.

Experiments have shown that a high percentage of the newborns fall into the traps thanks to the attraction of the UV rays whereas the majority is captured within the first two hours.

This attraction decreases as the insect grows. When the insect is ready to lay eggs, it looks for cool and damp places where eggs are protected both by the predators and UV rays.

A disinfection treatment is therefore mainly effective at the beginning of spring since newborns could be eliminated as they grow up.

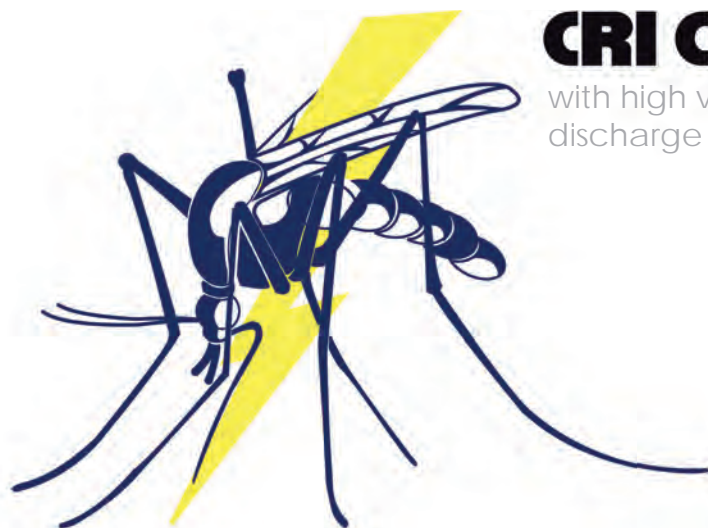
DEVICES PLACEMENT

In order to make it work effectively, the device has to be placed in the shadow rather than in the bright light. This is due to the fact that the sunlight is stronger than the rays emitted by the device and would therefore compromise the right use of the device. In the same way the moon light and the artificial light may also interfere with the correct operation of the device.

It is therefore necessary to place the insecticide far away from every light source. If there are more devices in the same place, it is also necessary to separate them according to their ranges. For example if an insecticide has a range of 10 m, a second insecticide has to be positioned 20 m far away from the other one. In order to make the device work effectively, do not put the device close to light walls since the light it produces will reflect on the surface or cloffse to air draughts. Put the device at the right height (2-3 meters above the floor).

ELECTRIC-INSECTICIDES

CasaFan



CRI CRI®

with high voltage
discharge grille



MO-STICK

with glue pades



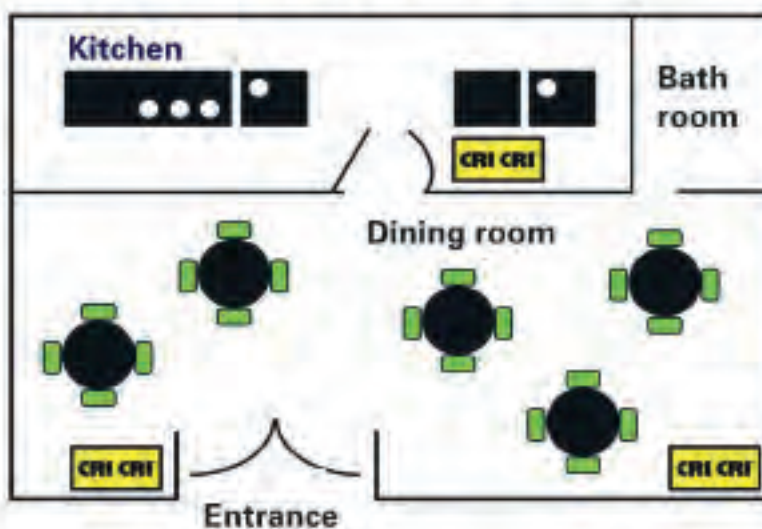
insectivoro

with exhaust fan



FOR AN OPTIMAL PLACEMENT

- 1- Place CRI CRI far away from crowded places.
- 2- Avoid placing CRI CRI in the direct sunlight, since the shadow helps its optimal operation.
- 3- The ideal height is 2 meters above the floor, but certain insect specimen should require a different placement.
- 4- Do not place CRI CRI close to draughts, which could make the insects go away. It is recommended to oversize the device: the strongest is the lamp power the more efficient is the performance.



HIGH VOLTAGE INSECT TRAPS

CasaFan

FEATURES

CRI CRI is the best-selling and most imitated insecticide ever. Thanks to a farsighted business strategy, CRI CRI got a leadership position in the international market since 25 years. Since the beginning, MO-EL has perfectly combined high quality and affordable prices. MO-EL pays extreme attention to raw materials and technological investments and its production organization combines flexibility, quality and cheapness. The final result is a wide set of professional and domestic devices, for every requirement. The principle behind its operation is simple: CRI CRI attracts the insects thanks to specific ultraviolet lamps and kill them with an electrical discharge as they go through the internal grille.

COMPONENTS

CRI CRI is extremely efficient and functional and is equipped with an extractable drawer that guarantees cleanness and security.

BODYWORK

The bodywork is in techno polymer, which protects the electric parts from dirt and damp and guarantees a better heat reduction.

MATERIALS

The materials MO-EL use are all self-extinguishing (in order to avoid possible short-circuits), heat-resistant (for getting the best performance also at high temperatures) and anti UV (for an persistent quality over time). The metal grids are tested under the salty steam test to grant a strong anti-oxidation quality.

GRILLES

The HV (high voltage) grilles are in galvanized steel and are self-cleaning whereas the protection grilles are in painted steel and resist to UV rays and bad weather.

SAFETY

CRI CRI professional , ideal both for indoor and outdoor spaces, protects children and domestic animals by eliminating every possibility to get in touch with the live parts.

WARRANTY

All CRI CRI models from the professional line are covered by a MO-EL full warranty, except for the lamps that have to be substituted every year. All MO-EL devices are approved by IMQ and UL laboratories to satisfy the strictest requirements of CE, SASO and TER.

CRI CRI®

CRI CRI 304



ART.304

made in Italy

Ideal for medium sized environments, this model combines compactness and strength with extreme easy cleaning.

STRUCTURE

CRI CRI is an elegant discreet and effective device that ensures consistent quality and performance over time. It is covered by a MO-EL warranty of 2 years, excluding the lamps which have to be substituted every year.

LAMPS

Equipped with a UV-A lamp with power of 15W and an irradiation of about 8-10 mt.

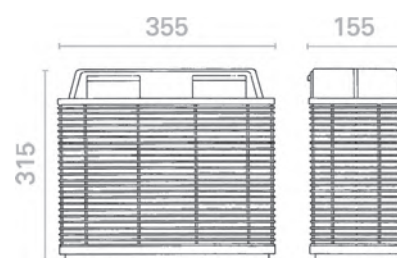
SAFETY

IPX3 protection against rain. Grilles and plastic elements have been tested against oxidation. Body work has been tested in order to resist to extreme heat and dryness conditions. Grilles maintain their efficiency longer, thanks to the high tension discharge and the electrified sticks which are properly spaced.



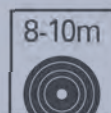
Accessories 304

Lamp UV-A, 15 W.
Art. 415



TECHNICAL FEATURES

TECHNICAL FEATURES	304
Dimensions (mm)	355 x 155 x 315
Weight (kg)	4,1
Supply voltage (V/Hz)	230 V~50 Hz
Total consumption (W)	35
Insulation class	II
Degree of protection	IPX3
Covering (m.r. linear)	8 - 10
Discharge voltage (V)	5.000
Lamp	1 x 15 W UV-A
Lifetime lamp (h)	1.500
Material	Steel painted, ABS



IPX3





CRI CRI 300N

STRUCTURE

Light and compact, CRI CRI 300N is made of self-extinguishing technopolymer and anti UV. Extremely easy to clean thanks to a removable drawer .
 Lamp and electrified grille are equipped with the exclusive cleaning system (MO-EL license) which guarantees a perfect cleaning without any disassembly.
 All products in this line are covered by a MO-EL warranty of 2 years, excluding the lamps which have to be susbituted every year.

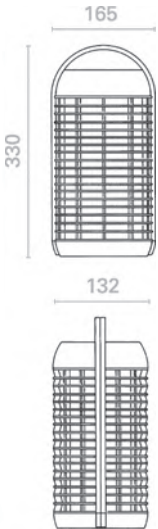
LAMPS

High quality UV-A lamp with power of 6 W and irradiation of about 3-5 mt.

SAFETY

Approved by IMQ and in CE conformity.

ART.300N

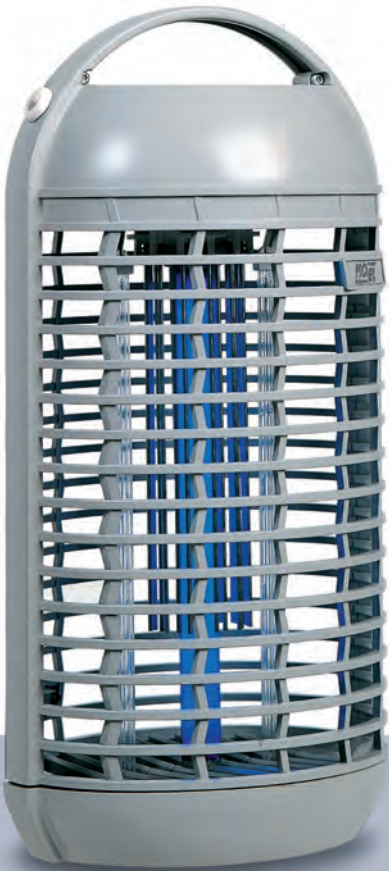


Accessories 300N

Lamp UV-A, 6 W.
 Art. 421



PATENTED ROD FOR CLEANING THE GRILLE



TECHNICAL FEATURES	300N
Dimensions (mm)	132 x 165 x 330
Weight (kg)	1,1
Supply voltage (V/Hz)	230 V~50 Hz
Total consumption (W)	6
Insulation class	II
Covering (m.r. linear)	3 - 5
Discharge voltage (V)	1.500
Lamp	1 x 6 W UV-A, actinic
Lifetime lamp (h)	1.500
Material	ABS

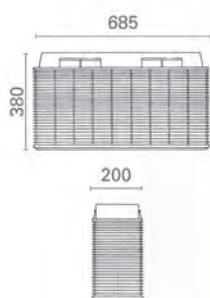


CRI CRI 308A



ART.308A

made in Italy



The 308A is designed for agricultural sites even where water is in use in the cleaning maintenance of the floor and other surfaces.

STRUCTURE

The robust structure ensures the longest life product also in difficult working conditions. The item is covered by a MO-EL warranty of 2 years, excluding the lamps which have to be substituted every year.

The external zinc grille is equipped with a grounding device : in case of water jets , water goes from high tension grid to the protection grid and finally on the ground, so that no damage is caused to the object responsible for the jets. Shall the external grilles be removed, a security switch removes power to the machine.

LAMPS

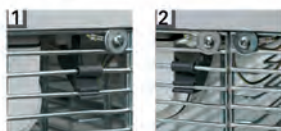
The two UV-A lamps of 40W generate a light emission of 80W and an irradiation of almost 15 – 18 meters. The top case has been developed in order to avoid too much water or dust in the device.

SAFETY

Totally hygienic and safe, this model is approved by IMQ in IPX4 class. Protected against water and safe for being installed outside permanently.

INTERNAL GRILLE ON
ALTERNATING CURRENT

1. SAFETY SWITCH
2. EXTERNAL GRILLE
GROUNDED



Accessories 308A

Lamp UV-A, 40 W.
Art. 802

TECHNICAL FEATURES	308A
Dimensions (mm)	685 x 200 x 380
Weight (kg)	8,6
Supply voltage (V/Hz)	230 V~50 Hz
Total consumption (W)	95
Insulation class	I
Degree of protection	IPX4
Covering (m.r. linear)	15 - 18
Discharge voltage (V)	5.000
Lamp	2 x 40 W UV-A
Lifetime lamp (h)	2.000
Material	Steel, ABS



IPX4





CRI CRI 307A

This model is intended for agricultural use and for environments where it is necessary to work with water jets.

STRUCTURE

The item ensures consistent quality and performance over time. The external zinc grille is equipped with a grounding device : in case of water jets , water goes from high tension grille to the protection grille and finally on the ground, so that no damage is caused to the object responsible for the jets. Shall the external grilles be removed, a security switch removes power to the machine.

LAMPS

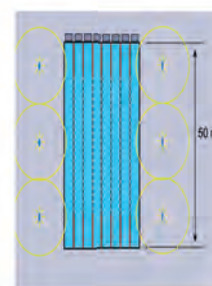
The two UV-A lamps of 20W generate a light emission of 40W and an irradiation of almost 12 – 15 meters. The lamp case is watertight, in order to avoid too much water or dust in the device.

SAFETY

Totally hygienic and safe, this model is approved by IMQ in IPX4 class. Protected against water and safe for being installed outside permanently. Grilles and plastic elements have been tested against oxidation and the body work is tested in order to resist to extreme heat and dryness conditions. Grilles maintain their efficiency in time and a condition of perfect cleaning thanks to the high tension discharge and the electrified sticks which are properly spaced.

ART.307A

made in Italy



EXAMPLE: POSITIONING
ON A SWIMMING POOL

Accessories 307A

Lamp UV-A, 20 W.
Art. 512



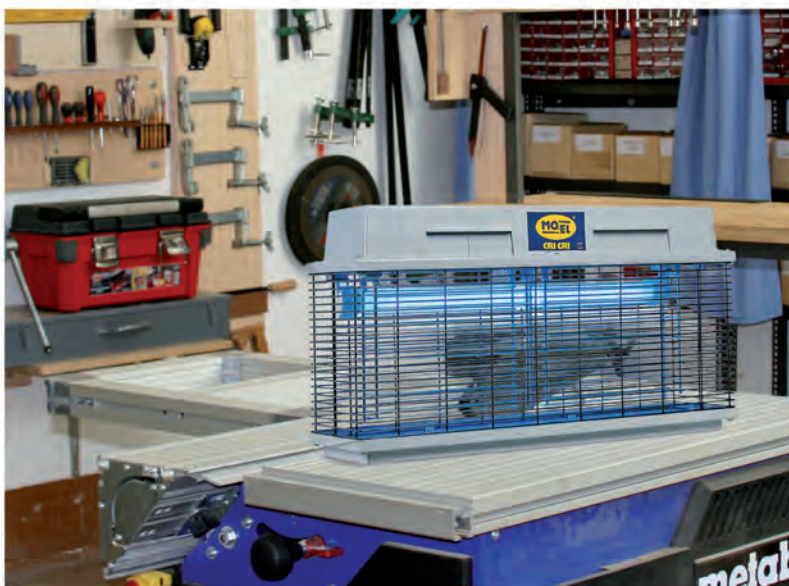
TECHNICAL FEATURES	307A
Dimensions (mm)	685 x 200 x 380
Weight (kg)	8,0
Supply voltage (V/Hz)	230 V~50 Hz
Total consumption (W)	65
Insulation class	I
Degree of protection	IPX4
Covering (m.r. linear)	12 - 15
Discharge voltage (V)	5.000
Lamp	2 x 20 W UV-A
Lifetime lamp (h)	2.000
Material	Steel, ABS



IPX4



CRI CRI 308E



ART.308E

made in Italy

CRI CRI 308 E is the most effective electric insecticide of the professional line.

STRUCTURE

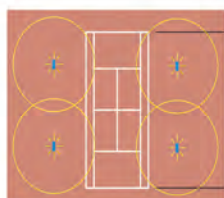
The robust structure ensures the longest life product also in difficult working conditions. The item is covered by a warranty of 2 years, excluding the lamps which have to be substituted every year.

LAMPS

Equipped with two UV-A lamps with power of 40 W and an irradiation of about 15-18 mt. The lamp case is watertight, in order to avoid too much water or dust in the device

SAFETY

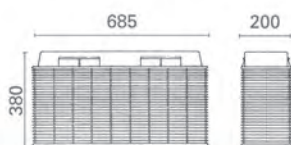
Totally hygienic and safe, this model is approved by IMQ in IPX4 class. Protected against water and safe for being installed outside permanently. Grilles and plastic elements have been tested against oxidation and the body work is tested in order to resist to extreme heat and dryness conditions. Grilles maintain their efficiency in time and a condition of perfect cleaning thanks to the high tension discharge and the electrified sticks which are properly spaced.



EXAMPLE: POSITIONING
ON A TENNIS COURT

Accessories 308E

Lamp UV-A, 40 W.
Art. 802



TECHNICAL FEATURES	308E
Dimensions (mm)	685 x 200 x 380
Weight (kg)	8,6
Supply voltage (V/Hz)	230 V~50 Hz
Total consumption (W)	95
Insulation class	II
Degree of protection	IPX4
Covering (m.r. linear)	15 - 18
Discharge voltage (V)	5.000
Lamp	2 x 40 W UV-A
Lifetime lamp (h)	2.000
Material	Steel painted, ABS



IPX4





CRI CRI 307E

Designed to grant the same quality and safety of CRI CRI 308E model 307E comes with 2 lamps by 20W reaching a total power of attraction of 40W.

STRUCTURE

The robust structure ensures the longest life product also in difficult working conditions. The item is covered by a MO-EL warranty of 2 years, excluding the lamps which have to be substituted every year.

LAMPS

The UV-a light in the wavelength range of 315-400nm is not visible to the human eye but it is perceived by many insects. The two UV-A lamps have a power of 40 W and a range of attraction of about 12-15 mt.

SAFETY

Hygienic and safe, this model is approved by IMQ in IPX4 class. Protected against water and safe for being installed outside permanently. Grilles and plastic elements have been tested against oxidation and the body work is tested in order to resist to extreme heat and dryness conditions. Grilles maintain their efficiency in time and a condition of perfect cleaning thanks to the high tension discharge and the electrified sticks which are properly spaced.

ART.307E

made in Italy



EXAMPLE: POSITIONING
ON A FOOTBALL COURT



Accessories 307E

Lamp UV-A, 20 W.
Art. 512

TECHNICAL FEATURES	307E
Dimensions (mm)	685 x 200 x 380
Weight (kg)	8,0
Supply voltage (V/Hz)	230 V~50 Hz
Total consumption (W)	65
Insulation class	II
Degree of protection	IPX4
Covering (m.r. linear)	12 - 15
Discharge voltage (V)	5.000
Lamp	2 x 20 W UV-A
Lifetime lamp (h)	2.000
Material	Steel painted, ABS



IPX4



CRI CRI 305E



ART.305E



This model is characterized by an excellent price/quality ratio.

STRUCTURE

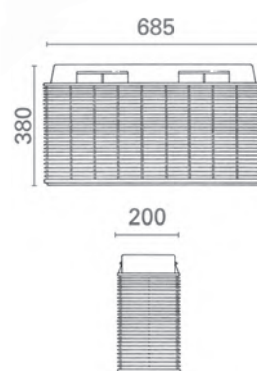
The strong structure ensures the longest operating life to this product also in challenging working conditions. The item is covered by a MO-EL warranty of 2 years, excluding the lamps which have to be substituted every year.

LAMPS

Equipped with an UV-A lamps with power of 20 W and an irradiation of about 10-12 mt. The lamp case is shielded, in order to avoid too much water or dust in the device.

SAFETY

Approved by IMQ in IPX4 class and suitable for outdoor use.



Accessories 305E Lamp UV-A, 20 W. Art. 512

TECHNICAL FEATURES	305E
Dimensions (mm)	685 x 200 x 380
Weight (kg)	8,0
Supply voltage (V/Hz)	230 V~50 Hz
Total consumption (W)	45
Insulation class	II
Degree of protection	IPX4
Covering (m.r. linear)	10 - 12
Discharge voltage (V)	5.000
Lamp	1 x 20 W UV-A
Lifetime lamp (h)	2.000
Material	Steel painted, ABS



IPX4





CRI CRI 309

Light and compact, CRI CRI 309 is extremely easy to clean thanks to a removable drawer.

ART.309



STRUCTURE

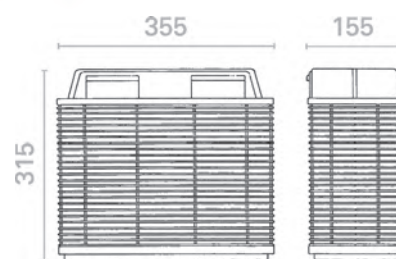
The strong structure ensures the longest life product also in difficult working conditions. The item is covered by a MO-EL warranty of 2 years, excluding the lamps which have to be substituted every year.

LAMPS

Equipped with two UV-A lamps with power of 15 W it reaches a 30W performance . With such a power 309 achieves a range of action of 10-12mt. The lamp case is molded to combat water and dust penetration.

SAFETY

Approved by IMQ in IPX3 class. Grilles has been tested against oxidation and the body work is tested in order to resist to extreme heat and dryness conditions



Accessories 309 Lamp UV-A, 15 W. Art. 415

TECHNICAL FEATURES

309

Dimensions (mm)	355 x 155 x 315
Weight (kg)	4,2
Supply voltage (V/Hz)	230 V~50 Hz
Total consumption (W)	45
Insulation class	II
Degree of protection	IPX3
Covering (m.r. linear)	10 - 12
Discharge voltage (V)	5.000
Lamp	2 x 15 W UV-A
Lifetime lamp (h)	1.500
Material	Steel painted, ABS



IPX3



308S



ART.308S

made in Italy

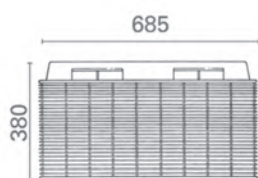
The whole set is designed for agricultural sites and places that need water spraying.

STRUCTURE

The extremely robust structure made of stainless steel ensures the longest product life also in hard working conditions. The external zinc grid is equipped with a grounding device: in case of water jets, water goes from the high tension grid to the protection grid and finally on the grounding, preventing any risk of electric shocks. Should the external grids be removed, a security switch turns off the power of the device.

LAMPS

The two 40W UV-A lamps generate a light emission of 80W and an irradiation of almost 15 – 18 meters. The lamp case is watertight, in order to avoid water or dust inside the device.



Accessories 308S

Lamp UV-A, 40 W
Art. 802

TECHNICAL FEATURES

TECHNICAL FEATURES	308S
Dimensions (mm)	685 x 200 x 380
Weight (kg)	11,0
Supply voltage (V/Hz)	230 V~50 Hz
Total consumption (W)	95
Insulation class	I
Degree of protection	IPX4
Covering (m.r. linear)	15 - 18
Discharge voltage (V)	5.000
Lamp	2 x 40 W UV-A
Lifetime lamp (h)	2.000
Material	Stainless steel, ABS



IPX4





STRUCTUR

The leightweight and compact model GEKKO is constructed for highest performance and easy maintenance and cleaning in home and private use . Its made of selfdistinguishing, technical polymer. Simple and easy cleaning of discharge grille and lamps thanks a patented drawerwithout oping the unit.

The item is covered by a MO-EL warranty of 2 years, excluding the lamps which have to be substituted every year..

The device can be placed on furnitures or suspended on chains. The retractable carrying handle makes the device ideal for use in changing locations.

LAMPS

Equipped with two UV-A lamps with power of 15 W and an irradiation of about 6 - 8 mt.

SAFETY

Electrical safety pproved by IMQ.

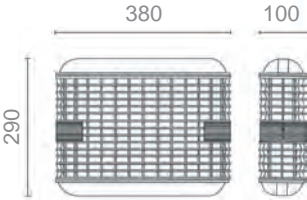
ART.369



Retractable carrying handle and cleaning drawer

Accessories

369 Lamp UV-A, 15 W Art. 415



TECHNICAL FEATURES	369
Dimensions (mm)	380 x 290 x 100
Weight (kg)	2,9
Supply voltage (V/Hz)	230 V~50 Hz
Total consumption (W)	45 W
Insulation class	II
Degree of protection	IP20
Covering (m.r. linear)	6 - 8
Discharge voltage (V)	2.000
Lamp	2 x 15 W UV-A
Lifetime lamp (h)	1.500
Material	ABS





WHAT IS HACCP?

HACCP (Hazard Analysis Critical Control Point) is a legal requirement and a systematic preventive approach to food safety against biological, chemical and physical hazards in food processing, which may lead to finished products are unsafe for consumption. HACCP defines a way to identify, document, reduce and monitor the risks.

It is the Hazard Analysis and Control of Critical Points - at all relevant stages of preparation, processing, manufacturing, packaging, storage, transport, distribution, handling and sale of foodstuffs.

According the valid Regulation (EC) no. 853/2004 of the European Parliament and the Council of 29 April 2004 on the hygiene of foodstuffs Chapter 1, Article 1 / a, the responsibility for the safety of a food rests on the food business operator.

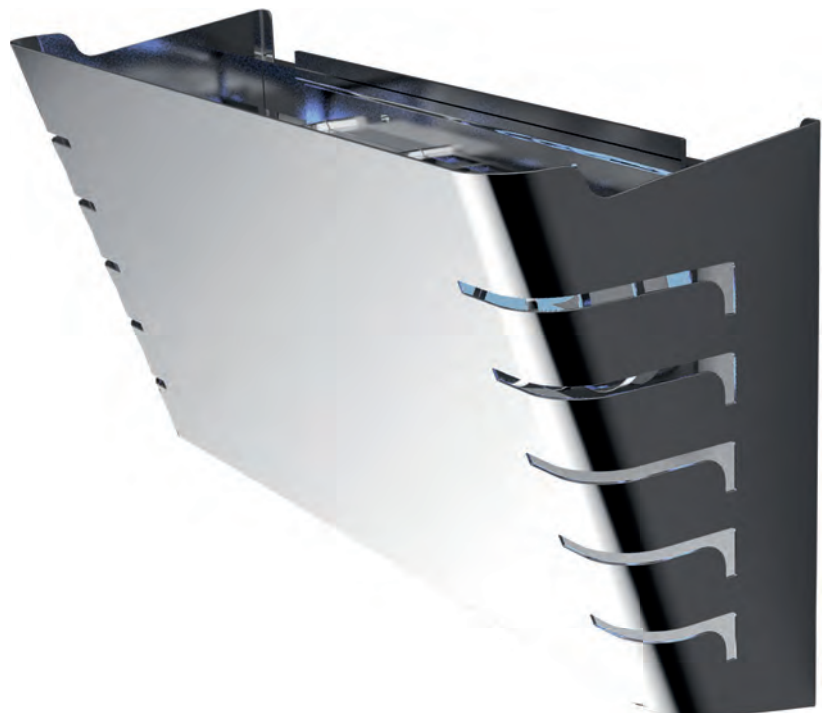
HACCP applies to all members in the supply chain, in which one of the above activities is carried out - regardless of whether the activity is used for commercial purposes or not.

This means that the from large, industrial food supply records to the small snack kitchen, all steps, critical control points must be defined, monitored regularly and be clearly documented for the food-monitoring authority.

Failing this, consequences ranging from fines to closure of the production facility or kitchen by the authority.

The number of our Insect traps with glue pads allows easy and fast control and logging of harmful insects and its course, tailored to the requirements of the HACCP regulations.

Glue pads are easy to swap quickly and hygienically. They are ideal for restaurants, snack bars, food departments in supermarkets, butchers, fish shops, bakeries and pharmacies.



INSECT TRAPS

WITH ADHESIVE PAPER

CasaFan



HARMFUL EFFECTS CAUSED BY INSECTS

In order to avoid any contamination, it is necessary to adopt a radical strategy against flying insects, such as flies and gnats, whose larvae feed on fine organic material. As they grow, these insects get in touch with dangerous pathogenic agents such as streptococci, which causes skin infections, Campylobacter, which causes severe intestine infections and Klebsiella, which causes urinary and respiratory infections. Other dangerous insects are for example the tribolio, the trogoderma, the tegola and the anodio which damage foods. It is therefore necessary to implement an efficient protection against insects through constant procedures of monitoring and control.

SOLUTIONS ACCORDING TO LAW EFFICIENCY OF UV-A LAMPS

The most efficient solution is the UV-A light electric insecticide, which uses UV-A rays to attract insects without causing damage to the human being or foods. An efficient UV-A lamp must ensure an extreme precision in its frequency of emissions and has therefore to be substituted every year. It is very important to substitute the old lamp with an original MO-EL lamp.

UV-A LAMPS

The MO-EL's perfect luminous sources are low-pressure mercury vapor lamps made by a glass envelope containing two electrodes, with inner fluorescent coating. They have an irradiation of 300-400 nm with a peak of 365 nm.

TO INCREASE THE EFFICIENCY OF THE LUMINOUS TRAP

MO-EL has created a complete set of paper adhesives with dithering in order to facilitate the monitoring.

MO STICK INOX



ART.372



Designed for large environments that require high hygienic conditions.

STRUCTURE

The item is completely made of stainless steel AISI 304, welded and treated for environments where food is prepared. In order to protect it against water jets and dust, the item is equipped with watertight lamp holder, cable and rubber plug with watertight cable duct, gasket between the bodywork and the lid.

MO-STICK is a trap that ensures the monitoring of the captured insects. Characterized by a clean and elegant design, it is extremely simple to clean and to substitute the adhesive papers (this item comes with starting kit of 4 glue boards). MO-STICK can be hung thanks to two practical chains, put or lean on the wall.

LAMPS

The two powerful shatterproof UV-A lamps with power of 40W are installed on a watertight lamp holder and are equipped with a sheath for the protection of the tube: In the event of glass breakage, glasses do not disperse in the environment and at the same time the phosphors are not missing. The sheath is perfectly transparent to UV-A rays.

SAFETY

Approved by IMQ in IP65 class and in CE conformity.

397 - 372

SHATTER PROOF LAMP

INSTALLATION ON CEILING OR WALL

NEW ELECTRONIC BALLAST

TECHNICAL FEATURES	372
Dimensions (mm)	655 x 385 x 235
Weight (kg)	7,8
Supply voltage (V/Hz)	220 - 240 V~50 Hz
Total consumption (W)	95
Insulation class	I
Degree of protection	IP65
Covering (m.r. linear)	15 - 18
Lamp	2 x 40 W UV-A Shatter proof
Lifetime lamp (h)	2.000
Material	Stainless steel, adhesive paper



IP65





MO STICK PROFESSIONAL

Designed for large environments that require high hygienic conditions.

ART.397

made in Italy

POSITIONING

Lamps have to be installed far away from light sources (windows etc) and air currents, since they may hinder the insect's fly. The best positioning is between the entrances and the production points, so that insects can be captured before they arrive to the critical points.

STRUCTURE

The item is made of white painted sheet metal.

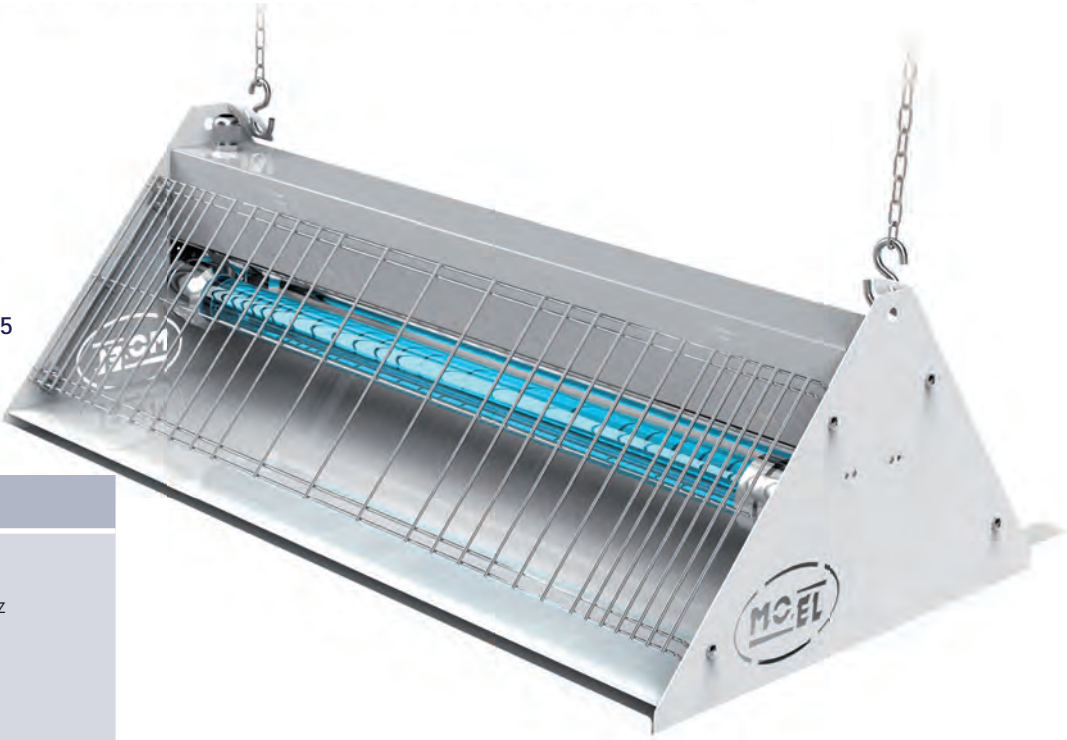
GLUE PADS

The unit comes with a set of 4 pcs. adhesive paper.

Accessories 397 - 372

Lamp UV-A, 40 W, shatter proof
Art. 788

Glue boards, set of 10 pcs.**Art. 1625**



TECHNICAL FEATURES	397
Dimensions (mm)	655 x 385 x 235
Weight (kg)	7,8
Supply voltage (V/Hz)	220 - 240 V~50 Hz
Total consumption (W)	95
Insulation class	I
Degree of protection	IP65
Covering (m.r. linear)	15 - 18
Lamp	2 x 40 W UV-A Shatter proof
Lifetime lamp (h)	2.000
Material	Stainless steel, adhesive paper



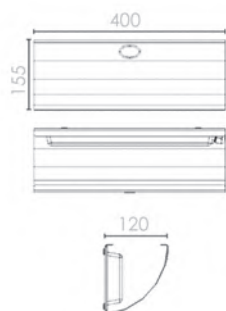
IP65





ART.701

made in Italy



MOFLY is designed in conformity with HACCP and is a powerful item for preventing and eliminating all kind of insects in the surrounding environment.

STRUCTURE AND INSTALLATION

The combination of the UV-A lamps and the adhesive paper is the only system that ensures the monitoring of the insects. . Adhesive paper prevents the fragmentation of the insects and permits an easy tracking of the trapped specimen.

The item can be fixed or leaned on the wall. MO-FLY comes with 4 glue boards.

LAMPS

Equipped with two UV-A lamps with a power of 30W and an irradiation of 10-12 mt.

SAFETY

Approved by IMQ in IP55 class and in CE conformity. The electric parts, including the UV-A lamps are isolated and protected by the transparent and unbreakable coverage in compliance with health and safety standards.



Accessories 701

Lamp UV-A, 15 W
Art. 788

Glue boards, set of 10 pcs.
Art. 2413

TECHNICAL FEATURES	701
Dimensions (mm)	400 x 120 x 155
Weight (kg)	2,2
Supply voltage (V/Hz)	230 V~50 Hz
Total consumption (W)	40
Insulation class	II
Degree of protection	IP55
Covering (m.r. linear)	10 - 12
Lamp	2 x 15 W UV-A
Lifetime lamp (h)	1.500
Material	Aluminium, glue pads



MOBUTTERFLY is designed in conformity with HACCP and is a powerful item for preventing and eliminating all kind of insects in the surrounding environment. When insects get close to the item, they remain attached to the adhesive paper, fixed on the sides.

STRUCTURE AND INSTALLATION

Mo-butterfly is completely made of aluminum and is suitable for environments where food is prepared. Adhesive paper can be quickly removed, ensuring an easy and effective cleaning. Can be attached to the wall or ceiling. Mo-Butterfly comes with a starting kit of 4 glue boards.

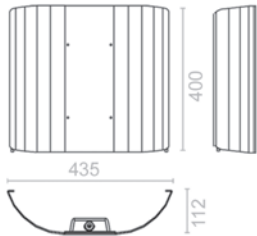
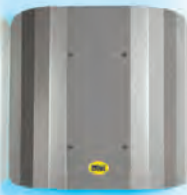
LAMPS

Equipped with two UV-A lamps with a power of 30W and an irradiation of 10-12 mt.

SAFETY

Approved by IMQ in IP55 class and in CE conformity. The electric parts, including the UV-A lamps are isolated and protected by the transparent and unbreakable coverage in compliance with health and safety standards.

ART.700



Accessories 700

Lamp UV-A, 15 W
Art. 788

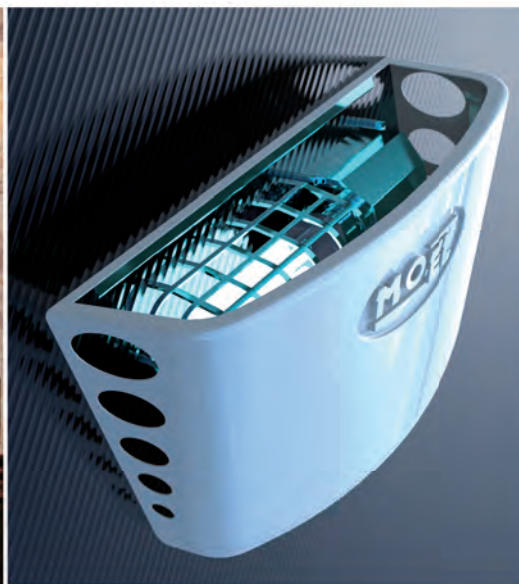
Glue boards, set of 10 pcs.
Art. 2413

TECHNICAL FEATURES	700
Dimensions (mm)	112 x 435 x 400
Weight (kg)	2,2
Supply voltage (V/Hz)	230 V~50 Hz
Total consumption (W)	40
Insulation class	II
Degree of protection	IP55
Covering (m.r. linear)	10 - 12
Lamp	2 x 15 W UV-A
Lifetime lamp (h)	1.500
Material	Aluminium, glue pads



IP55





ART.399



Paper adhesive trap created for environments that must combine an efficient tool against flying insects with elegant design.

399 MO-plick has been developed for permanent installation. Also Mod 399 comes with starting kit of 4 glue boards.

STRUCTURE AND LAMPS

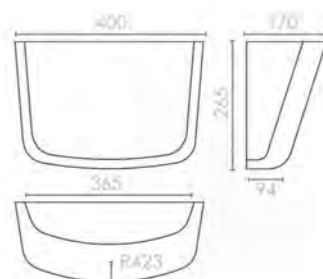
Easy to clean, MO-CLICK can be painted over, in order to be adapted to the environment. Both the external bodywork and the paper adhesive are extremely

NEW PAINTABLE HOUSING

Accessories 399

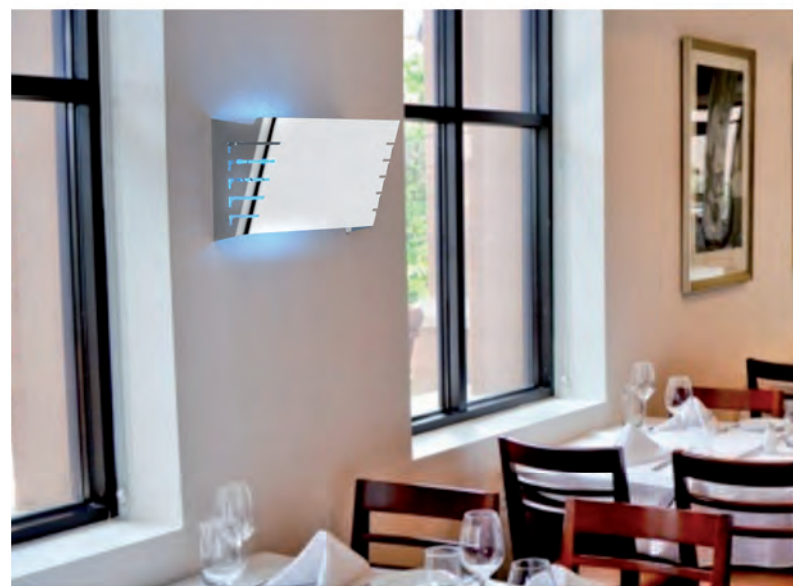
Lamp UV-A, 20
Art. 1932

Glue boards, set of 10 pcs.
Art. 1888



TECHNICAL FEATURES	399
Dimensions (mm)	400 x 170 x 265
Weight (kg)	1,4
Supply voltage (V/Hz)	220 - 240 V~50 Hz
Total consumption (W)	20
Insulation class	I
Degree of protection	IP20
Wirkfläche (m²)	3 - 5
Lamp	1 x 20 W UV-A
Lifetime lamp (h)	1.500
Material	PVC, glue pad





MO PLICK INOX

Paper adhesive electric insecticide has been created for environments that must combine an efficient pest control item with elegant and smart design.

ART.398R

made in Italy

STRUCTURE

The external body made of stainless steel AISI 304 with a thickness of 1,2 mm is easy to clean and to remove.

LAMPS

Equipped with a high quality UV-A lamp with a power of 20W and an irradiation of about 4-5 mt.

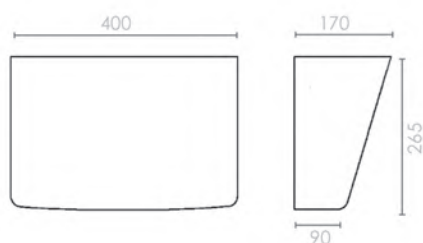
SAFETY

Approved by IMQ in conformity with the European Safety Standards
Mo-plick INOX has been developed for permanent installation. 398 comes with starting kit of 4 glue boards.

Accessories 398R

Lamp UV-A, 20
Art. 1932

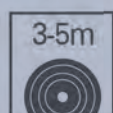
Glue boards, set of 10 pcs.
Art. 1888



TECHNICAL FEATURES

398R

Dimensions (mm)	400 x 170 x 265
Weight (kg)	2,9
Supply voltage (V/Hz)	220 - 240 V~50 Hz
Total consumption (W)	20
Insulation class	II
Degree of protection	IP20
Wirkfläche (m²)	3 - 5
Lamp	1 x 20 W UV-A
Lifetime lamp (h)	1.500
Material	Stainless steel, glue pad





FEATURES

MO-EL has designed a complete range of suction traps which is environmentally safe and completely harmless to humans and pets.

INSECTIVORO combines the UV-A lamps with a built-in fan. Insects are attracted by the light, when they approach the luminous source the fan traps them into a drawer. The MO-EL patented drawer is equipped with an automatically closing flap. For this reason insects can't escape when the item is off.

LAMPS

MO-EL sources its UV-A lamps exclusively from the best manufacturer all over the World. In order for the item to be efficient, it is necessary to substitute the old/nonfunctional lamps with original MO-EL lamps.

COMPONENTS

THE FAN

The fan, made of plastic and equipped with rounded blades, traps the insects without smashing them and leads them into the drawer. It is completely safe also for children. Designed in compliance with the CE standards, the fan stops automatically in case of accidental contact with fingers or other parts.

DOORS

The trapping doors are placed inside the device and function automatically as the fan is switched on and off.

STRUCTURE

Made of scratch-resistant plastics, INSECTIVORO combines extreme ease and practicability of use with an innovative design. Light and movable, it is suitable both for domestic and professional use. Filters and drawer are quickly removable and easy to clean.

PLUS

SAFETY

INSECTIVORO is approved by the Italian IMQ. It is insulated in class II and does not need to be grounded. It is realized with extreme resistant and elastic.

ECOLOGY

Produced with recyclable materials, INSECTIVORO does not use poisons, chemicals lures and it doesn't emit any smoke or bad smell.

SAVING

low costs and long-lasting durability.

QUALITY OF LIFE

No noise, no smell, no visible insect. INSECTIVORO works for a better environment and a better life.

LAMPS

UV-A LAMPS

The MO-EL's perfect luminous sources are low-pressure mercury vapor lamps made by a glass envelope containing two electrodes, with inner fluorescent coating. They have a luminous spectrum of 300-400 nm with a peak of 365 nm

UV-C LAMPS – GERMICIDE

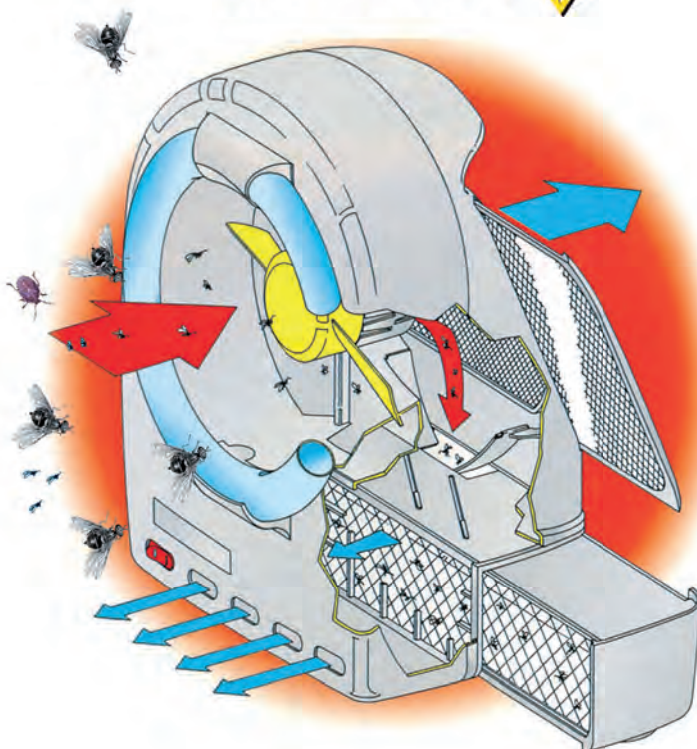
Low-pressure mercury vapor lamps made by a glass envelope with short wave length and a peak of 253,7 nm. This powerful light destroys the bacteria exposed to its luminous emission. Due to its power it has been built into the unit and it hidden from the outer sight. The air coming from the collecting drawer is definitely filtered and sanitized.

SUCTION INSECT TRAPS

CasaFan



MOON
insectivoro

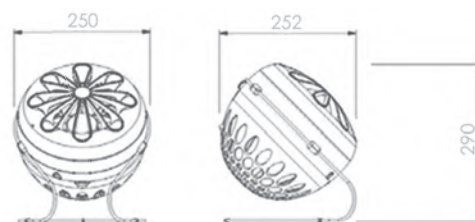


CRI CRI®
MOON



ART.3688

Moon is the newest model in the CRI CRI family. Moon combines the efficiency of CRI CRI with the elegance of INSECTIVORO. The IPX4 water protection permits outdoor positioning. The 45° inclination boosts its efficiency against tiger mosquitos. The actinic 32W UV-A lamp ensures a coverage of more than 300 m². The safety shell protects the lamp against impacts. Moon is silent and is equipped with an energy saving engine with a total consumption of 25W.





MOON's light imitates the luminous emission of the sun beams reflected by the water and thus deceives and traps mosquitos. The 45° inclination and the intensity of the vacuum system makes it efficient against the aedes albopictus (tiger mosquito). The fan is safe and stops as long as any body touches it. Lamp is protected by a safety shell. Robustness and IPX4 degree of protection makes it a safe and efficient device both for indoor and outdoor.

Accessories

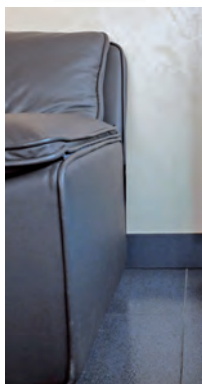
MOON

Lamp UV-A, 32W



PROTECTIVE SHELL
Protects the lamp against impacts and water.

EASY CLOSING SYSTEM
It is easy to empty the drawer and cleaning the filter



TECHNICAL FEATURES	3688
Dimensions (mm)	250 x 252 x 290
Weight (kg)	1,4
Supply voltage (V/Hz)	220-240 V~50/60 Hz
Total consumption (W)	25
Motor power (W)	4,5
Motor speed (rpm)	1.200
Insulation class	II
Degree of protection	IPX4
Covering (m.r. linear)	14 - 16
Lamp	32 W UV-A, actinic
Lifetime lamp (h)	2.000
Material	ABS, PMMA



IPX4



INSECTIVORO BASIC



ART.361B

This model offers all the main functions of INSECTIVORO . Easy to clean thanks to the filter and the extractable drawer and convenient to carry.



THE FAN MOTOR WORKS AT TWO DIFFERENT SPEEDS

The first speed is slower and more silent and is therefore suitable for capturing mosquitos during the night. The second is faster, suitable for capturing bigger insects such as flies, horseflies, bedbugs during the daylight. The basic model presents all the functions and is ideal both for domestic and commercial use. Thanks to the double speed , it works perfectly both during the day and at night. It can be installed on furniture, on the ground or hung on the walls, using the plug supplied. It is recommended to position the device in dark places and to clean filters and drawer very often.

PATENTED DRAWER DOUBLE SPEED

Easy to clean -
removable drawer

made in Italy

Accessories 361B

Lamp UV-A, 32W

Art. 1493

Filter for drawer

Art. E10-2574

Blue rear filter

Art. E10-2572



TECHNICAL FEATURES	361B
Dimensions (mm)	245 x 220 x 340
Weight (kg)	2,4
Supply voltage (V/Hz)	230 V~50 Hz
Total consumption (W)	55
Power motor (W)	4,5
Speed motor (rpm)	900/1.050
Insulation class	II
Covering (m.r. linear)	14 - 16
Lamp	32 W UV-A, aktinisch
Lifetime lamp (h)	2.000
Material	PC-ABS





INSECTIVORO STERILIZER

Equipped with an intern UV-C lamp, it captures the insects and sterilizes the drying air from microbes and bacteria. This model has been designed for hygienic and environmental purposes: ideal for restaurants, butcheries, food shops, hospitals and clinics.

THE FAN MOTOR WORKS AT TWO DIFFERENT SPEEDS

The first speed is slower and more . It is perfect for capturing mosquitos during the night. The second is faster, suitable for capturing bigger insects such as flies, horseflies, bedbugs during the day.

ART.363G



GERMICIDAL LAMP
PATENTED DRAWER

made in Italy

Accessories 363G

Lamp UV-A, 32W

Art. 1493

Lamp UV-C, 9 W, germicid

Art. 862

Grey filter for drawer

Art. E10-2575

Gray rear filter

Art. E10-2573



Certification: Germicidal effectiveness test (University of Parma)

TECHNICAL FEATURES	363G
Dimensions (mm)	245 x 220 x 340
Weight (kg)	2,6
Supply voltage (V/Hz)	230 V~50 Hz
Total consumption (W)	75
Speed motor (rpm)	900/1.050
Insulation class	II
Covering (m.r. linear)	14 - 16
Lamp	32 W UV-A, aktinisch
Lamp germicid	9 W UV-C
Lifetime lamp (h)	2.000
Material	PC-ABS



INSECTIVORO



ART. 368G

Specifically designed for low cost desensitization, this model is characterized by the best quality-price ratio. The 32W lamp has a range of action of about 14-16 mt.



ONE SPEED MOTOR

Ideal for capturing bigger insects in absolute silence.



Washable filters



PATENTED DRAWER

Easy to clean - removable drawer



Accessories 368G

Lamp UV-A, 32W

Art. 1493

Filter for drawer

Art. E10-2573

Grey rear filter

Art. E10-2575

TECHNICAL FEATURES	368G
Dimensions (mm)	245 x 220 x 340
Weight (kg)	2,4
Supply voltage (V/Hz)	230 V~50 Hz
Total consumption (W)	55
Speed motor (rpm)	900
Insulation class	II
Covering (m.r. linear)	14 - 16
Lamp	32 W UV-A, actinic
Lifetime lamp (h)	2.000
Material	PVC-ABS



TURBINE



Accessories 30602

Lamp UV-A, 40W

Art. 802

Ersatzsammelsack Art. 2869



EFFECTIVENESS

Turbine is particularly effective for the use in rural areas and breeding farms. The use of chemical insecticides and pesticides could damage crops and the animals health. Turbine, on the contrary, attracts the insects thanks to the light emitted by the lamps. The insects get close to the device and are sucked by a fan which trap them in the lower part of the device.

The external structure, the fan, the box for the housing of the electric components are in metal and guarantee the effectiveness and robustness of the device.

CONDITIONS OF USE

Turbine has a IPX4 degree of protection and could be used outdoor according to law. Wall-mounting with supplied brackets and dowels. The sack in the lower part can contain up to 25 liters of bugs.

SAFETY

Turbine is a safe device and does not present any risk. It does not emit smokes which may disturb the animals. It does not use chemical substances which require substitution.or.

ART.30602

made in Italy



TECHNICAL FEATURES

30602

Dimensions (mm)	407 x 356 x 941
Weight (kg)	11,0
Supply voltage (V/Hz)	230 - 240 V~50 Hz
Total consumption (W)	115
Motor speed (rpm)	1.000
Insulation class	I
Air suction (m/sec)	4
Covering (m.r. linear)	15 - 18
Lamp	2 x 40 W UV-A
Lifetime lamp (h)	2.000
Material	Aluminium / stainless steel



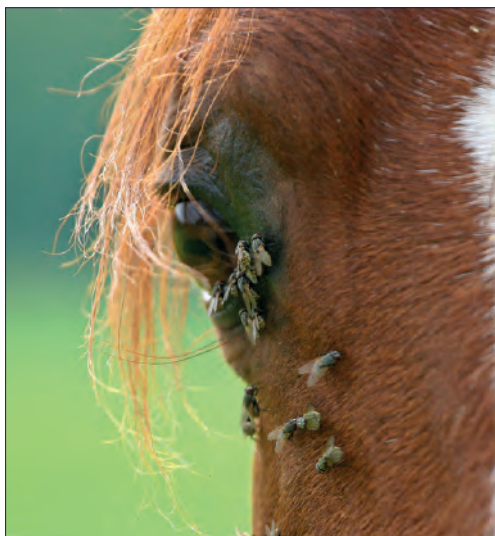
IPX4





CasaFan

Insects traps prevents...



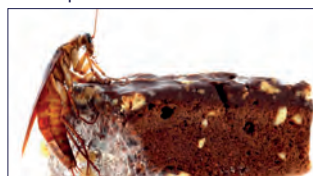
In livestock breeding and farming insects as flies and horseflies not only disturb the animals but also transmit diseases.



In the production of ham insect infestation of the pigs spoil the result.



By pest infestation large amounts of food products are spoiled and become unsuitable for human consumption.



Insects transmit a variety of ways diseases to humans.

Use of non-selective insect traps not permitted outdoors. The special lamps contained herein are not suitable for household room illumination.



Ihr Fachhandelspartner für CasaFan-Produkte:

All rights reserved. It is forbidden to publish, in full or in part, any text or photographs from this catalogue. The descriptions and illustrations in this catalogue are understood to be indicative and are not binding. CasaFan reserves the right, while not changing the and illustrated, to modify products whenever necessary and without warning. The product details are information from the particular manufacturers. MO-EL and CasaFan are registered trademarks. Although every care has been taken to provide accurate and up-to-date information, no responsibility can be accepted for any mistakes or misprints contained in this catalogue.